

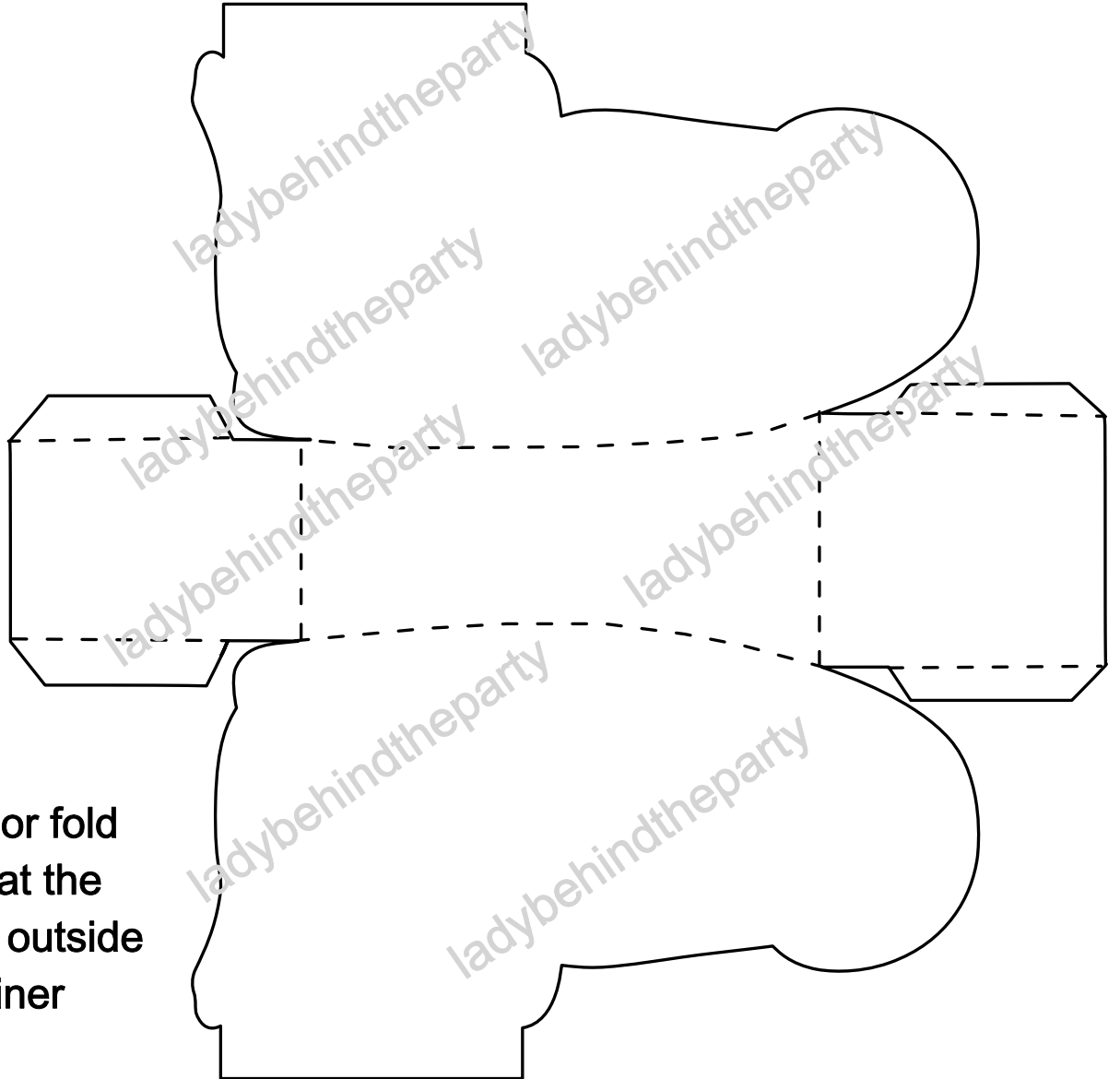
# Elf Shoe Treat Container

## Instructions

ladybehindtheparty

### Supplies:

- good scissors
- perforating tool  
(optional)
- low temp glue gun  
and glue sticks



### Instructions:

- cut around all solid lines
- use perforating tool on dotted lines or fold
- fold the sides up and ends up so that the inside is white and the print is on the outside
- glue flaps to the inside of the container