

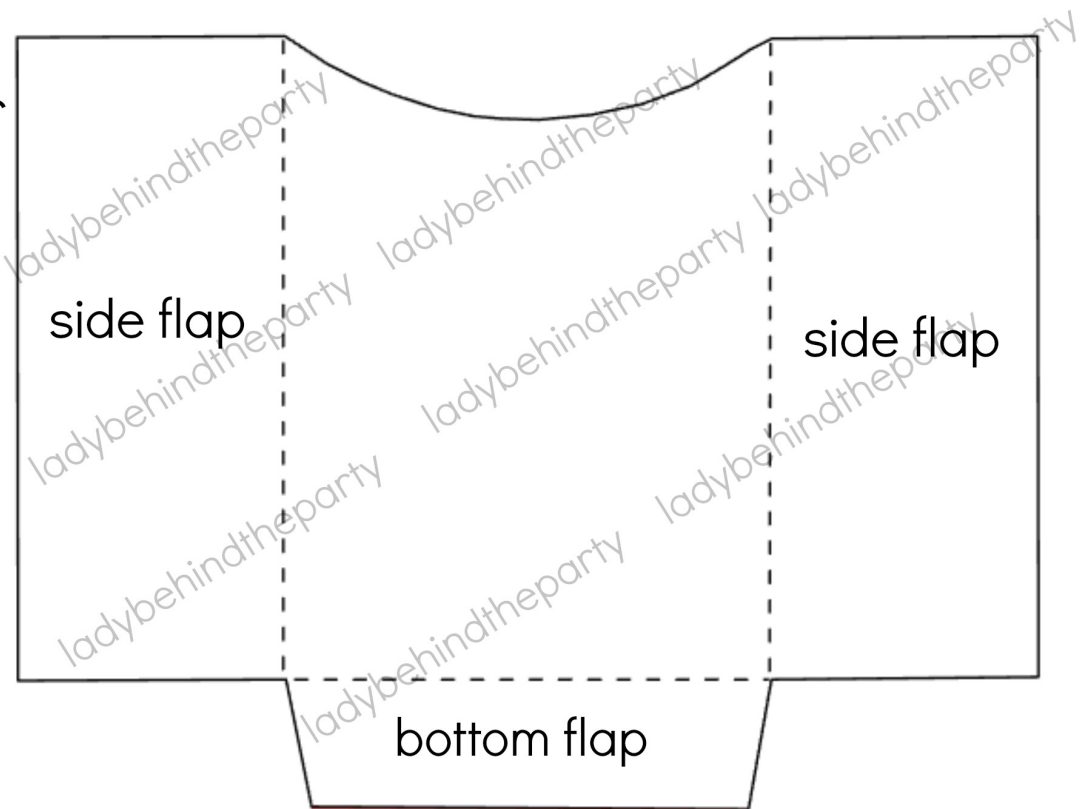
Treasure Map Party Favor Bag ~ Instructions Lady Behind the Party

measures 5 inches
wide x 7 inches tall

1. cut out
2. fold on perforated lines
3. fold side flaps around to the back and hot glue closed
4. bring up the bottom flap over the back flaps and glue closed

SUPPLIES:

- scissors
- folding tool or perforation tool
- low temp glue gun



TIP: THIS WORKS BEST PRINTED ON REGULAR COMPUTER PAPER